

# BAHIA

INDOOR & OUTDOOR

BAHIA INDOOR & OUTDOOR



PRODUCTO FABRICADO EN ESPAÑA PRODUCT MADE IN SPAIN PRODUIT FABRIQUÉ EN ESPAGNE

**PIEL SA**

PIEL, S.A. - Avda. Del Cordell de Múrcia, 6 - 46890 AGULLENT - SPAIN  
+34 962 907 400  
info@pielsa.es

**PIEL SA**

**PIEL SA**

Tejiendo por un mundo mejor

Piel SA, es una empresa comprometida con las personas, la calidad, el servicio y el planeta.

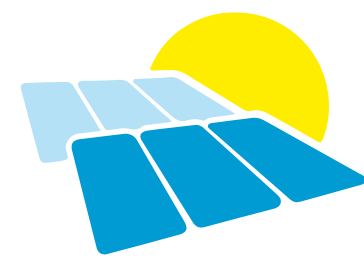


Weaving for a better world

Piel SA, is a company committed to people, quality, service and the planet.



COGENERACIÓN  
COGENERATION PLANT



PLACAS SOLARES  
SOLAR PANELS



BIOMASA  
BIOMASS



Piel SA, fundada en 1976, es una empresa textil con una área de producción de más de 70.000m<sup>2</sup>, certificada por SGS para la Norma de Calidad y Satisfacción del Cliente **ISO 9001: 2015**.

Piel SA, founded in 1976, is a textile company with 70.000m<sup>2</sup> production area, certified by SGS for the Quality and Customer Satisfaction Standard **ISO 9001:2015**.



SPEARMINT 20



LEMONS 20



MEJORANA 20



HINOJO 22



ALABEGA 20



# BAHIA

INDOOR & OUTDOOR



DECENT 20



DECENT 26



HINOJO 20



HINOJO 26



SPEARMINT 64



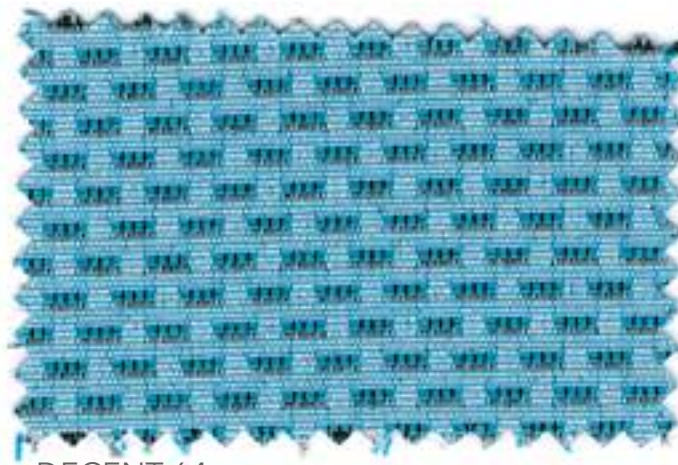
ALABEGA 70



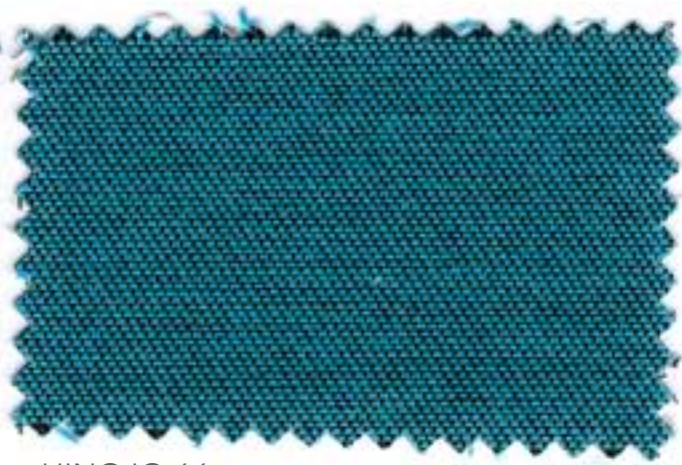
MEJORANA 70



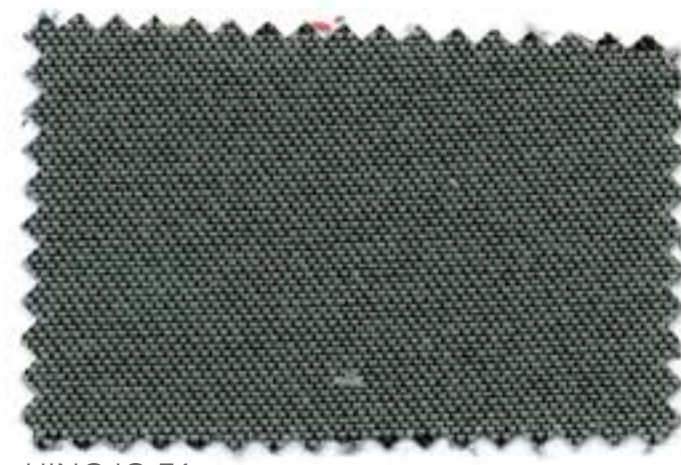
LEMONS 64



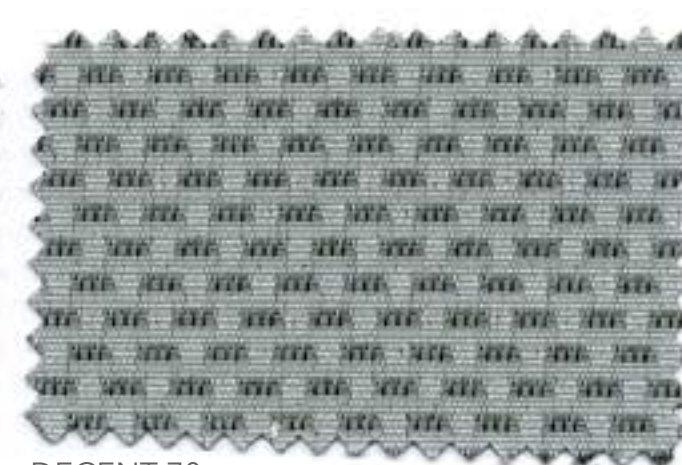
DECENT 64



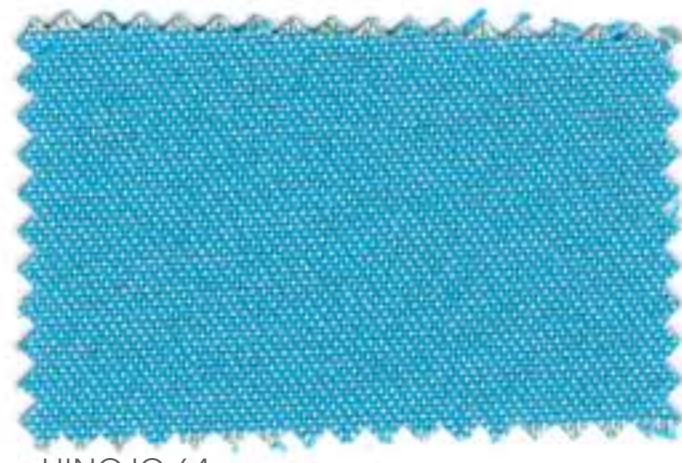
HINOJO 66



HINOJO 71



DECENT 70



HINOJO 64



HINOJO 70



LEMONS 70



MEJORANA 64



DECENT 26



HINOJO 26



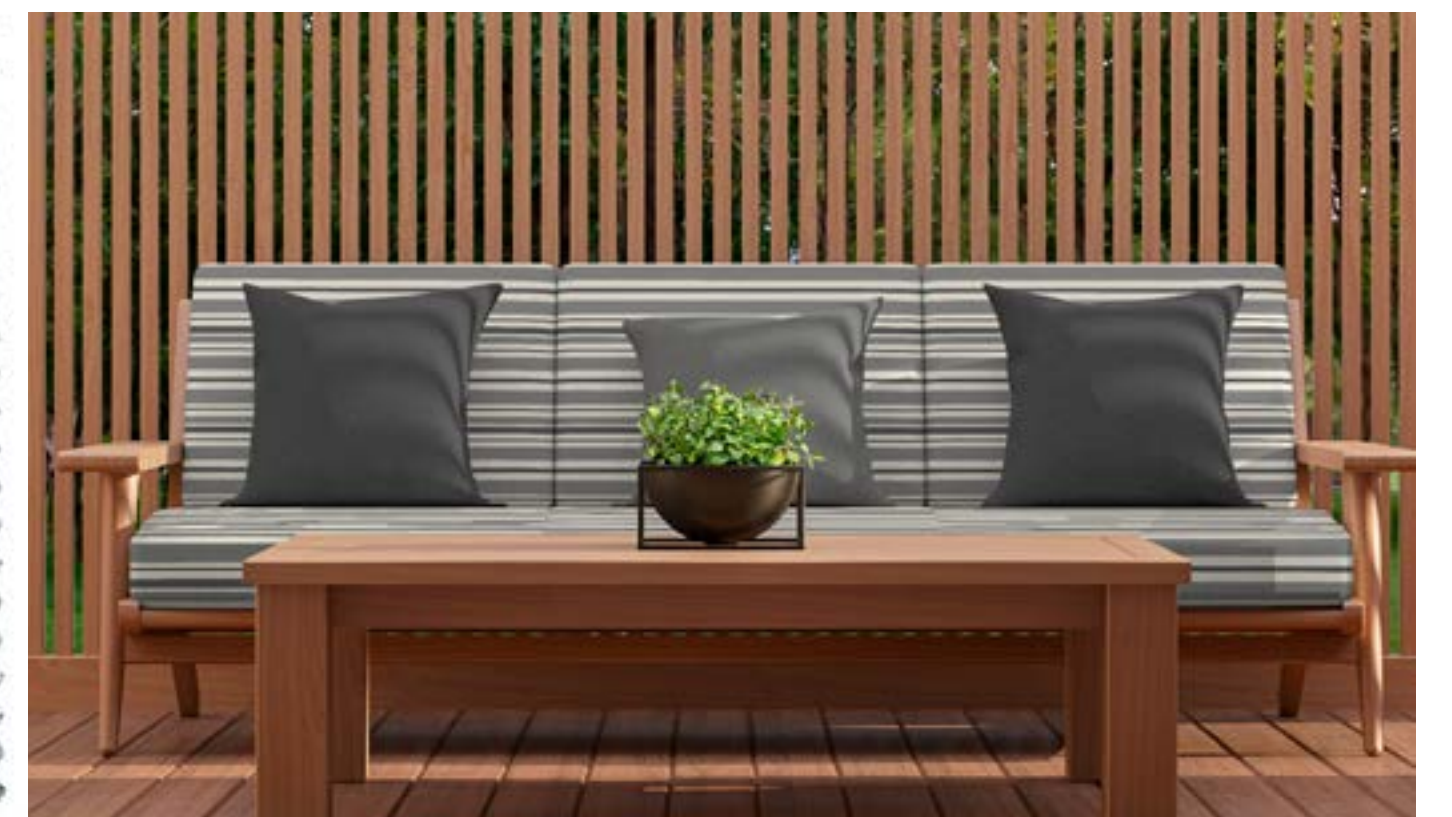
ALABEGA 64



SPEARMINT 70

# BAHIA

INDOOR & OUTDOOR





SPEARMINT 40



LEMONS 40



MEJORANA 40

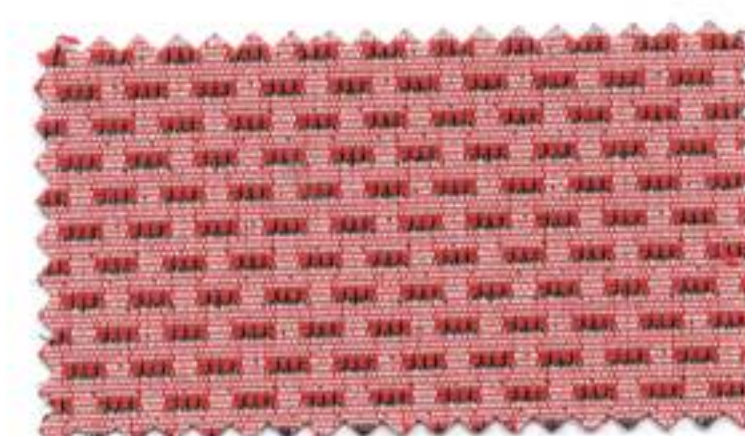


HINOJO 42



ALABEGA 40

BAHIA  
INDOOR & OUTDOOR



DECENT 40



DECENT 26



HINOJO 40



HINOJO 26



SPEARMINT 80



ALABEGA 50



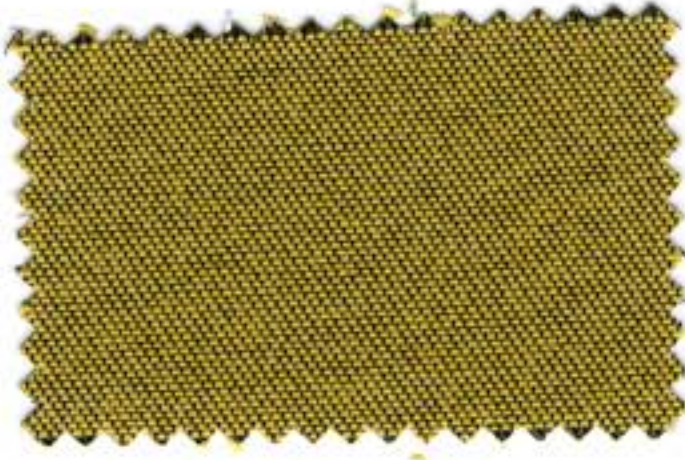
MEJORANA 50



LEMONS 80



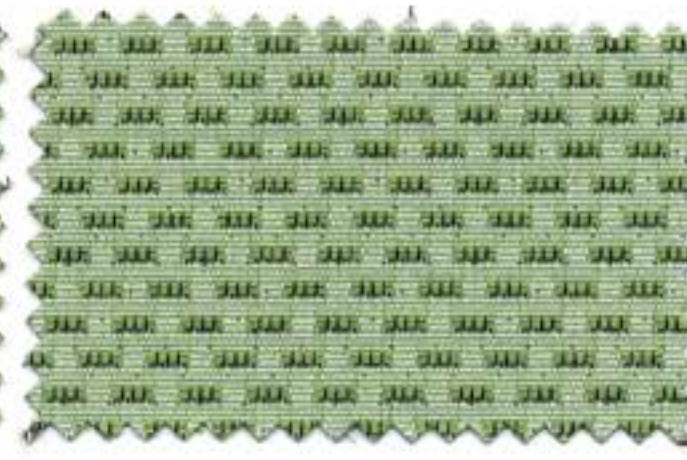
DECENT 80



HINOJO 82



HINOJO 52



DECENT 50



HINOJO 80



HINOJO 50



DECENT 26



HINOJO 26



MEJORANA 80

# BAHIA

INDOOR & OUTDOOR



ALABEGA 80



SPEARMINT 50



LEMONS 50





SPEARMINT 60



LEMONS 60



MEJORANA 60



HINOJO 62



HINOJO 60



HINOJO 26

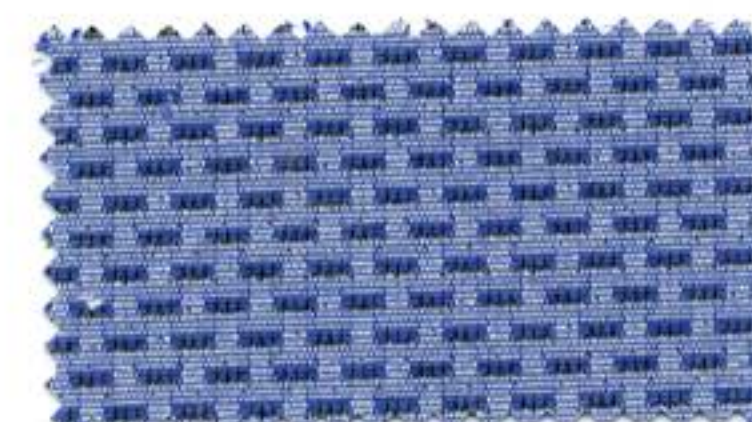


ALABEGA 60



# BAHIA

INDOOR & OUTDOOR



DECENT 60



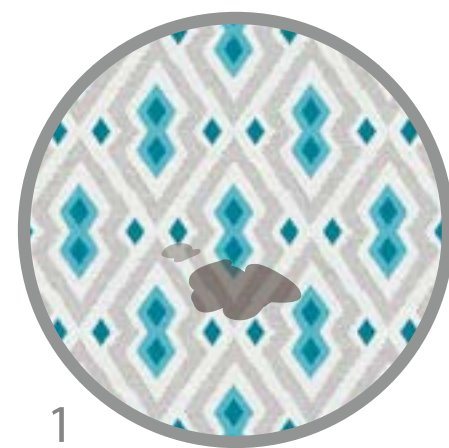
DECENT 26

# BAHIA

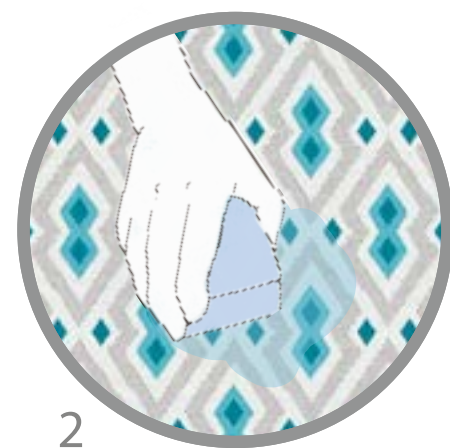
INDOOR & OUTDOOR



1. Retira el exceso de producto de la tapicería.  
1. Remove excess product from upholstery.  
1. Enlever le produit excédentaire du tissu.



2. Limpiar la mancha con un paño húmedo.  
2. Clean stain with a damp cloth.  
2. Nettoyez la tache avec un chiffon humide.

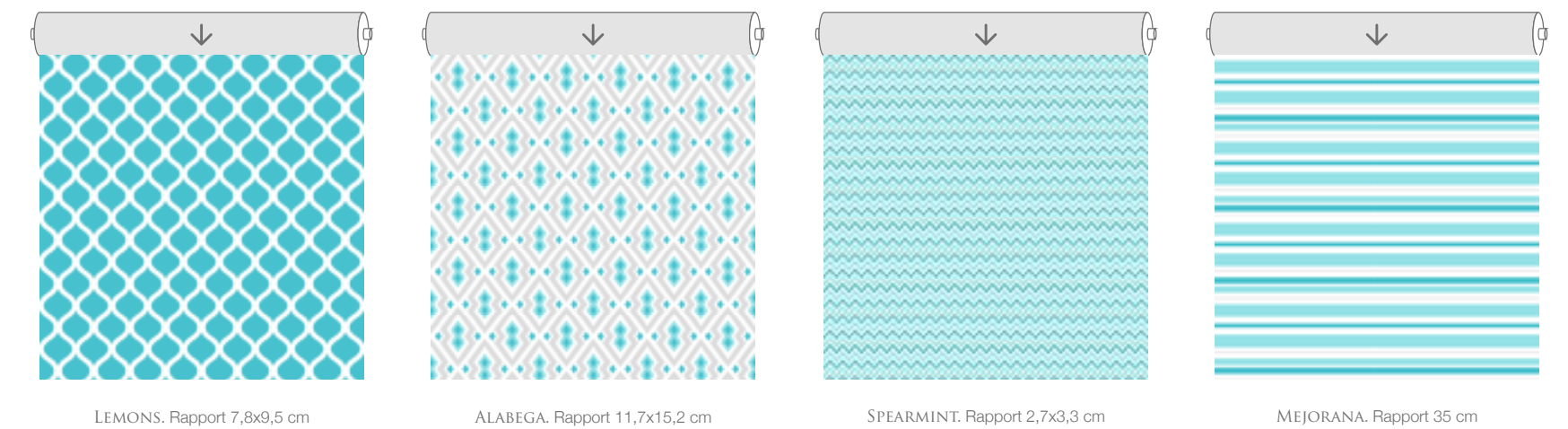


3. Dejar secar la tapicería al aire.  
3. Allow the upholstery to become air-dry.  
3. Laisser sécher le tissu dans l'air



# BAHIA

INDOOR & OUTDOOR



LEMONS. Rapport 7,8x9,5 cm

ALABEGA. Rapport 11,7x15,2 cm

SPEARMINT. Rapport 2,7x3,3 cm

MEJORANA. Rapport 35 cm

## CARACTERÍSTICAS TÉCNICAS TECHNICAL CHARACTERISTICS CARACTÉRISTIQUES TECHNIQUES

NOMBRE NAME NOM	ALABEGA	SPEARMINT	LEMONS	MEJORANA	HINOJO	DECENT
COMPOSICIÓN COMPOSITION COMPOSITION	59%PP-41%PES					
ANCHO (cm) WIDTH (cm) LARGEUR (cm)	140					
GRAMAJE (g/m²) WEIGHT (g/m²) GRAMMAGE (g/m²)	325					
ABRASIÓN (ciclos) ABRASION TEST (cycles) TEST D'ABRASION (cycles)	41.000	47.000	42.000	41.000	43.000	48.000
PILLING PILLING PILLING	5					
COSTURAS (u/t) SEAM STRENGTH (warp/weft) RES. DES COUTURES (c/t)	5,1/5,2	5,8/4,6	6,8/6	5,1/5,2	5,1/5,2	5,1/5,2
ACABADO FINISH FINITION						
INSTRUCCIONES LAVADO CLEANING INSTRUCTIONS INSTRUCTIONS DE LAVAGE						
SOLIDEZ A LA LUZ LIGHT FASTNESS SOLIDITÉ À LA LUMIÈRE						
APLICACIONES APPLICATIONS APPLICATIONS						

ABRASION TEST: UNE-EN ISO 12947-2 PILLING: UNE-EN ISO 12945-2 SEAM STRENGTH: UNE-EN ISO 13936-2 LIGHT FASTNESS: UNE-EN ISO 105-B04

Tejiendo por un mundo mejor - Weaving for a better world



MADE IN SPAIN



PIEL, S.A.  
Avda. Del Cordell de Murcia, 6  
46890 AGULLENT - SPAIN  
+34 962 907 400  
www.piel.es